

SPOTTY JET

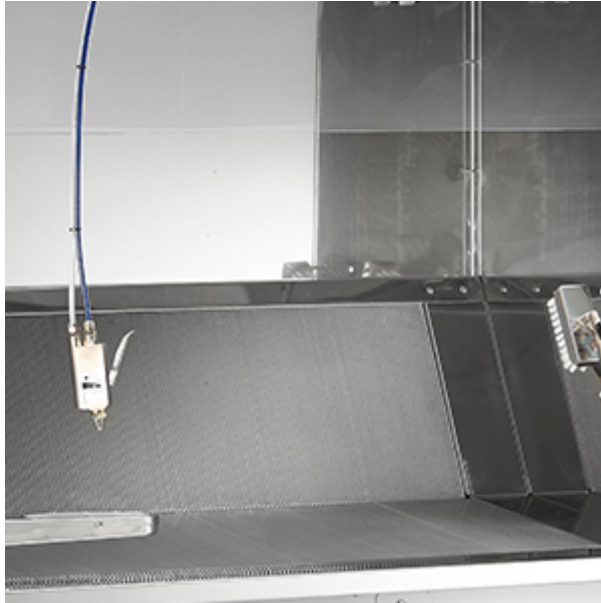


Pre-spotting cabinet.

Product code: 4450

DESCRIZIONE: The economical and ecological solution to all problems concerning pre- treatment and spotting. Designed for professional dry-cleaners, groups together in the same machine both a spotting cabinet and a spotting table. |

MAIN FEATURES



Entirely built out of stainless steel



Wide spotting surface

The large surface of 100 × 50 cm allows you to work comfortably and includes lighting and suction grilles.

**Pivoting spotting arm, with suction**

Cold spotting gun[FIND OUT MORE](#)**Soap gun**[FIND OUT MORE](#)**OPTIONAL**



Hot spotting module

The boiler is conveniently mounted on a tray that slides out of the machine body for refill and maintenance.



Steam/air gun with boiler or steam separator

[FIND OUT MORE](#)



Drying gun

[FIND OUT MORE](#)



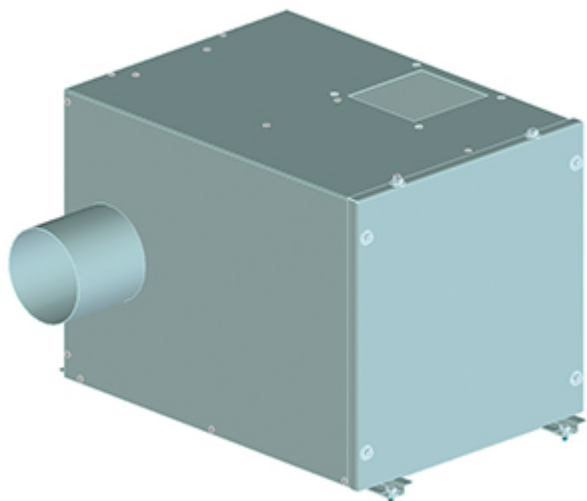
Second Chemical products gun with tank

[FIND OUT MORE](#)

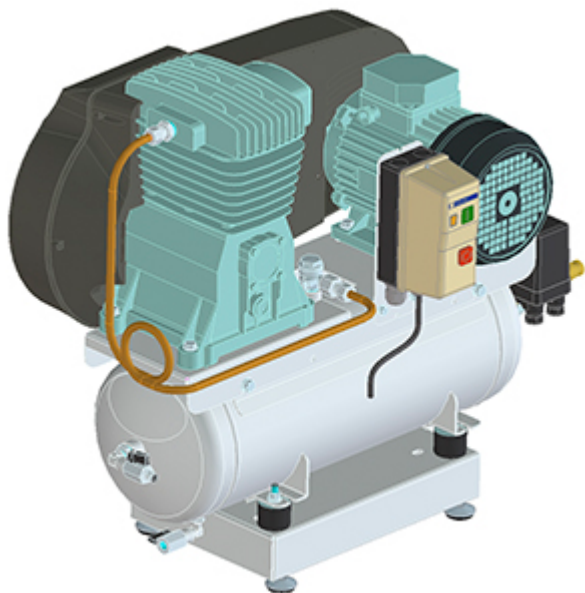


Mechanical spray gun for soaps

[FIND OUT MORE](#)



Active carbon filter



1,5 kW compressor

TECHNICAL SPECIFICATIONS

4450

Description	Pre-spotting cabinet
Electrical requirements	230V 50Hz 220V 60Hz
Total power	0,37 kW
Suction power	0,37 kW 0,5 HP
Steam consumption	1,12 kg/h (in the presence of a gun A/V) 2,5 lbs/h (in the presence of a gun A/V)
Air consumption	10 NI/h 0,35 cfm
Air pressure	500 kPa 72 PSI

4450**Footprint**

1005 x 605 mm

40" x 24"

Dimensions

1120 x 820 x 1730 (max 1890) mm

44" x 32" x 68" (max 74")

Net weight

101 kg

223 lbs